

NUTRITION SCIENCE COLLECTION

from the American Society for Nutrition (ASN)

<http://pubs.nutrition.org>

The American Journal of CLINICAL NUTRITION
A Publication of the American Society for Nutrition

MAY 2014 • VOLUME 99 • NUMBER 5

EDITORIALS

- A narrow view of optimal weight for health generates the obesity paradox. *JH Dixon and GJ Egger* 969
- Do impaired memory and body weight regulation originate in childhood with diet-induced hippocampal dysfunction? *TJ Davidson* 971
- Advice for fish consumption: challenging dilemmas. *MC Neuhart and M Nestle* 973

ORIGINAL RESEARCH COMMUNICATIONS

- Obesity and eating disorders**
 - Obesity interferes with the orexigenic detection of long-chain fatty acids in humans. *M Chevrot et al* 975
- Cardiovascular disease risk**
 - Effect of dairy calcium from cheese and milk on fecal fat excretion, blood lipids, and appetite in young men. *KY Coward et al* 984
- Nutritional status, dietary intake, and body composition**
 - Association of urinary sodium-to-potassium ratio with obesity in a multiethnic cohort. *N Jan et al* 992
- Obesity paradox in cancer: new insights provided by body composition.** *MC Gonzalez et al* 999
- Relation between the Supplemental Nutritional Assistance Program cycle and dietary quality in low-income African Americans in Baltimore, Maryland.** *AF Khamis et al* 1006
- Vitamins, minerals, and phytochemicals**
 - Vitamin D₃ supplementation during weight loss: a double-blind randomized controlled trial. *C Meyer et al* 1018
- Growth, development, and pediatrics**
 - Dietary lipids are differentially associated with hippocampal-dependent relational memory in prepubescent children. *CL Baum et al* 1026
 - Adiposity and hepatic lipid in healthy full-term, breastfed, and formula-fed human infants: a prospective short-term longitudinal cohort study. *C Gleason et al* 1034
 - Lower protein content in infant formula reduces BMI and obesity risk at school age: follow-up of a randomized trial. *M Weber et al* 1041
- Nutritional support**
 - Effects of enteral supplementation of methionine or alanine on cysteine and glutathione production during the early phase of treatment of children with edematous malnutrition. *CO Green et al* 1052
- Aging**
 - Associations of BMI and adipose tissue area and density with incident mobility limitation and poor performance in older adults. *JK Murphy et al* 1059
- Nutritional epidemiology and public health**
 - Seafood consumption and blood mercury concentrations in adults aged ≥20 y, 2007–2010. *SJ Heiser et al* 1066
 - Intake of trans fat and incidence of stroke in the REasons for Geographic and Racial Differences in Stroke (REGARDS) cohort. *JN Klag et al* 1071
 - Sugars and risk of mortality in the NIH-AARP Diet and Health Study. *M Sirocki et al* 1077
 - Prediction of vitamin D deficiency by simple patient characteristics. *E Suvi et al* 1089
 - Reviews examining sugar-sweetened beverages and body weight: correlates of their quality and conclusions. *J Messinghoff et al* 1096
 - Prospective study of dietary fat and risk of uterine leiomyoma. *LA Wise et al* 1105
- International nutrition**
 - The New Nordic Diet is an effective tool in environmental protection: it reduces the associated socioeconomic cost of diets. *H Saug* 1117
- Gene-nutrient interactions**
 - FTO genotype, dietary protein, and change in appetite: the Preventing Overweight Using Novel Dietary Strategies trial. *T Huang et al* 1126
- Dietary supplements**
 - Snacks containing soy protein and polydextrose induce a sustained reduction in daily energy intake over 2 wk under free-living conditions. *MJ Astbury et al* 1131

SUPPLEMENTS

- Nutrition Education in Training Medical and Other Health Care Professionals 1145S
- First Global Summit on the Health Effects of Yogurt 1205S

February 2016 • Volume 146 • Number 2

JN
THE JOURNAL OF NUTRITION
A Publication of the American Society for Nutrition • <http://jn.nutrition.org>

Gene-nutrient interactions

- FTO genotype, dietary protein, and change in appetite: the Preventing Overweight Using Novel Dietary Strategies trial. *T Huang et al* 1126
- Snacks containing soy protein and polydextrose induce a sustained reduction in daily energy intake over 2 wk under free-living conditions. *MJ Astbury et al* 1131

SUPPLEMENTS

- Nutrition Education in Training Medical and Other Health Care Professionals 1145S
- First Global Summit on the Health Effects of Yogurt 1205S

Supplement—2014 International Garlic Symposium: Role of Garlic in Cardiovascular Disease Prevention, Metabolic Syndrome, and Immunology

Advances in Nutrition
AN INTERNATIONAL REVIEW JOURNAL

Reviews, Including:

- Family Mealtime Literature and Factors Affecting Obesity Risk Research Strategies for Fructose Metabolism
- Supplement: 20th International Congress of Nutrition (ICN) Including: Mediterranean Diet and Cardiovascular Health: Teachings of the PREDIMED Study; Nutritional Phenotype Databases and Integrated Nutrition: From Molecules to Populations
- Nutrient Information: Carnitine
- Agency Report: CDC Guide to Strategies to Support Breastfeeding Mothers and Babies

VOLUME 5 • NUMBER 3 • MAY 2014 • www.nutrition.org

A Publication of
ASN
American Society for Nutrition
Nutrition Research and Practice

Featuring the Most Important Nutrition Research Findings and Reviews

THE AMERICAN JOURNAL OF CLINICAL NUTRITION (AJCN)

- The most highly rated peer-reviewed, primary research journal in Thomson Reuters' *Journal Citation Reports* nutrition and dietetics category
- Publishes the latest research on topics in nutrition, such as obesity, vitamins and minerals, nutrition and disease, and energy metabolism.
- Top 4% of journals indexed by Thomson Reuters
- **2014 Impact Factor: 6.770**
- 5 year Impact Factor: 7.328

ISSN: 0002-9165 / 1938-3207 online
<http://ajcn.nutrition.org>

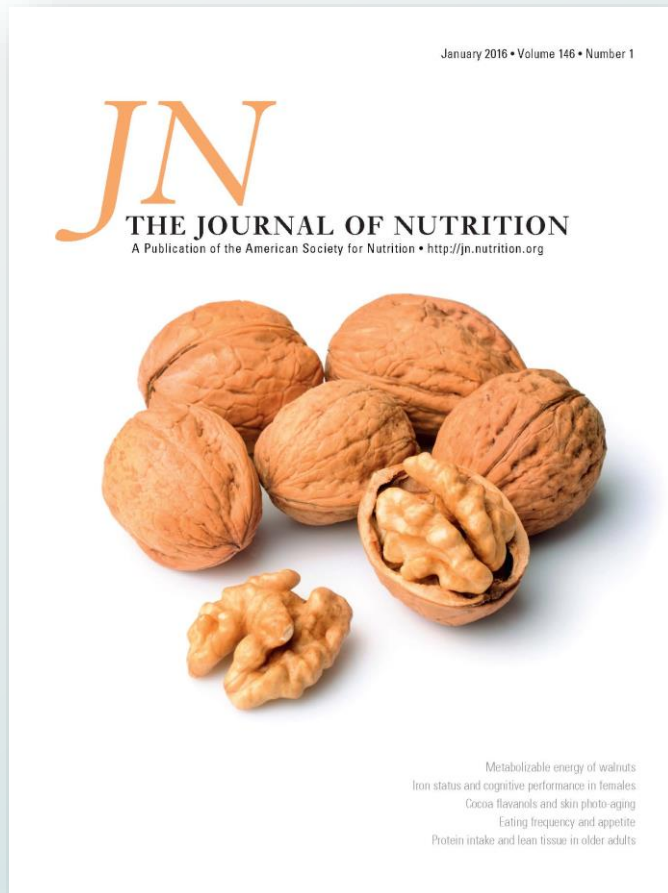
 **The American Journal of
CLINICAL NUTRITION**
A Publication of the American Society for Nutrition 

JANUARY 2016 • VOLUME 103 • NUMBER 1 <http://ajcn.nutrition.org/> ISSN 0002-9165

| EDITORIALS | |
|--|-----|
| Fish-oil supplementation: the controversy continues. K Simmer See corresponding articles on pages 115, 128 and 268. | 1 |
| Reflections on nutritional cancer epidemiology. P Boffetta See corresponding articles on pages 153, 168, 184, 192, and 218. | 3 |
| STATISTICAL COMMENTARY | |
| Best (but oft-forgotten) practices: sensitivity analyses in randomized controlled trials. RJ de Souza et al | 5 |
| ORIGINAL RESEARCH COMMUNICATIONS | |
| Obesity and eating disorders | |
| Energy and macronutrient intake after gastric bypass for morbid obesity: a 3-y observational study focused on protein consumption. V Gusti et al | 18 |
| Cardiovascular disease risk | |
| Dietary nitrate improves vascular function in patients with hypercholesterolemia: a randomized, double-blind, placebo-controlled study. S Veekunurugan et al | 25 |
| Is there a causal role for homocysteine concentration in blood pressure? A Mendelian randomization study. MC Borges et al | 39 |
| Nutritional status, dietary intake, and body composition | |
| Reduced dietary intake of simple sugars alters perceived sweet taste intensity but not perceived pleasantness. FM Wöde et al | 50 |
| Carbohydrate metabolism and diabetes | |
| Effect of Roux-en-Y gastric bypass and laparoscopic adjustable gastric banding on gastrointestinal metabolism of ingested glucose. F Magkos et al | 61 |
| Administration of resveratrol for 5 wk has no effect on glucagon-like peptide 1 secretion, gastric emptying, or glycemic control in type 2 diabetes: a randomized controlled trial. SS Thazhath et al | 66 |
| Acute effect of red meat and dairy on glucose and insulin: a randomized crossover study. KM Turner et al | 71 |
| Energy and protein metabolism | |
| Assessment of energy requirements in patients with short bowel syndrome by using the doubly labeled water method. PG Fassari et al | 77 |
| Pregnancy and lactation | |
| Macronutrient composition and gestational weight gain: a systematic review. MJ Traenkle et al | 83 |
| Genetic polymorphisms that affect selenium status and response to selenium supplementation in United Kingdom pregnant women. J Siao et al | 100 |
| Vitamin D content in human breast milk: a 9-mo follow-up study. SV Steyn et al | 107 |
| Growth, development, and pediatrics | |
| Folate and long-chain polyunsaturated fatty acid supplementation during pregnancy has long-term effects on the attention system of 8.5-y-old offspring: a randomized controlled trial. A Calzavara et al See corresponding editorial on page 1. | 115 |
| Omega-3 long-chain PUFA intake during pregnancy and allergic disease outcomes in the offspring: a systematic review and meta-analysis of observational studies and randomized controlled trials. KP Best et al See corresponding editorial on page 1. | 128 |
| Dietary vitamin D dose-response in healthy children 2 to 8 y of age: a 12-wk randomized controlled trial using fortified foods. NR Brett et al | 144 |
| Cancer | |
| Are strict vegetarians protected against prostate cancer? Y Tantamango-Bartley et al See corresponding editorial on page 3. | 153 |
| Nutrient-wide association study of 57 foods/nutrients and epithelial ovarian cancer in the European Prospective Investigation into Cancer and Nutrition study and the Netherlands Cohort Study. MA Merritt et al | 161 |
| Vegetable and fruit consumption and the risk of hormone receptor-defined breast cancer in the EPIC cohort. MJ Ernie et al See corresponding editorial on page 3. | 168 |
| Aging | |
| Leukocyte telomere length is related to appendicular lean mass: cross-sectional data from the Berlin Aging Study II (BASE-II). A Meyer et al | 178 |
| Nutritional epidemiology and public health | |
| Habitual intake of flavonoid subclasses and risk of colorectal cancer in 2 large prospective cohorts. K Nirmal et al See corresponding editorial on page 3. | 184 |

Continued on Table of Contents inside

THE JOURNAL OF NUTRITION (JN)



- First scientific journal dedicated to nutrition research
- Still the quickest to publish original studies about all aspects of human and animal nutrition
- Highly cited and recommended
- Trusted by experts who require the latest data to make informed health-related decisions and policies
- Top 10% of journals indexed by Thomson Reuters
- **2014 Impact Factor: 3.875**
- 5 year Impact Factor: 4.445

ISSN: 0022-3166 / 1541-6100 online
<http://jn.nutrition.org>

ADVANCES IN NUTRITION (AN)

Advances in Nutrition

AN INTERNATIONAL REVIEW JOURNAL

Perspectives, Including:

Food Classification in Epidemiologic Studies

Reviews, Including:

Dietary ω-3 Fatty Acids to Prevent Nonalcoholic Fatty Liver Disease

Retinol Binding Protein 4 and Cardiovascular Disease

Vitamins and Pancreatic Cancer

Racial and Ethnic Disparities in Obesity and Breast Cancer Risk

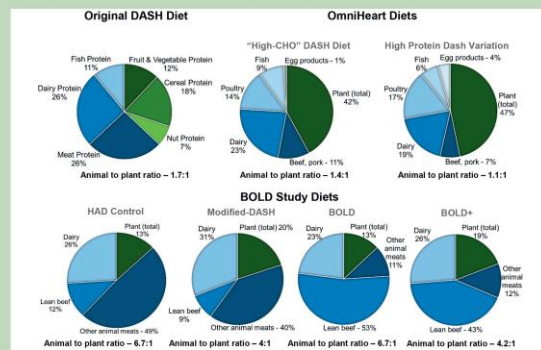
Reviews from ASN 2015 Symposia:

Integrating Nutrition and Child Development Interventions

Nutrient Information: Phosphorus

Agency Reports: Review of WIC Food Packages

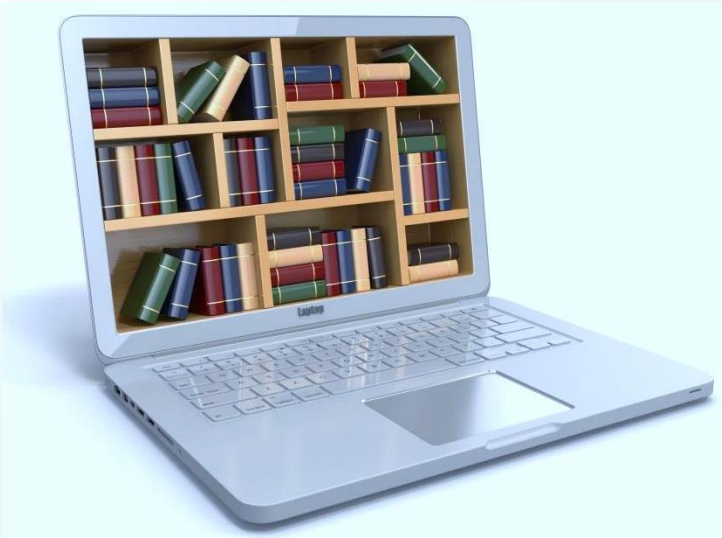
VOLUME 6 • NUMBER 6 • NOVEMBER 2015 • <http://advances.nutrition.org>



- Innovative content, impact, and a publication schedule that keeps pace with the ever-growing demand for the latest nutrition
- Has become a trusted resource among scholarly publications in the field of nutrition.
- Top 6% of journals indexed by Thomson Reuters
- **2014 Impact Factor: 5.386**
- 2013 Impact Factor: 4.897
- 2012 Impact Factor: 3.245
- Launched November 2010

ISSN: 2156-5376 online
<http://advances.nutrition.org>

NUTRITION SCIENCE LEGACY ARCHIVE (NSLA)



- Combined historical archive including backfile content from ASN flagship journals
 - *The Journal of Nutrition* (JN), 1928–1996
 - *The American Journal of Clinical Nutrition* (AJCN), 1952–1998
- NSLA grants perpetual rights for customers to access the archival content online
 - Without any annual maintenance fees
- **Available for a one-time purchase**
- Content can be viewed as searchable scanned PDF images of the printed pages for download

<http://pubs.nutrition.org>